



# 2024

# ANNUAL REPORT



**GIVING  
BACK  
CHANGING  
LIVES**

This report celebrates a year of **strengthening healthcare, social services, women's rights, child rights and peace in Liberia** through advocacy, awareness, and outreach programs.



+231777530431



[www.chciliberia.org](http://www.chciliberia.org)



Community Health Care Initiative INC

# STRENGTHEN OUR CON

1

## **INTRODUCTION:**

Reflecting on 2024 with pride—celebrating progress, partnerships, and resilience as we look ahead with renewed purpose and commitment.

---

2

## **2024 ACHIEVEMENTS:**

Honoring the meaningful progress and key accomplishments achieved throughout the year with pride and gratitude.

---

3

## **Challenges and Lessons Learned:**

Reflecting on 2024's obstacles and the important lessons learned to strengthen and guide our future efforts and strategies.

---

4

## **Financial Overview**

A clear overview of our 2024 financials, showing how funds were allocated and used to drive meaningful, measurable impact.

---

5

## **Strategic Priorities for 2025**

A summary of our ambitious goals and strategic plans aimed at creating deeper impact and meaningful change in the year ahead.

---

6

## **Call to Action-Support Our 2025 Plans:**

Join us in advancing our mission to empower women, girls, and marginalized groups, and create lasting, positive change together.







## **MESSAGE FROM THE EXECUTIVE DIRECTOR**

Dear Supporters, Partners, and Friends,

As we reflect on the journey of the past year, I extend my deepest gratitude to our dedicated team, steadfast partners, and the resilient communities we are privileged to serve. Your unwavering support and collaboration have been instrumental in sustaining our momentum and expanding our impact.

In 2024, the Community Healthcare Initiative (CHI) remained true to its mission of advancing health, empowerment, and rights for all, especially for women, girls, and gender-diverse individuals in marginalized communities. Despite ongoing socio-economic challenges, our team demonstrated remarkable commitment, adaptability, and compassion in reaching those who needed us most.

Through a diverse and growing portfolio of initiatives—including gender-based violence prevention, adolescent girls' leadership development, sexual and reproductive health and rights (SRHR) advocacy, safe abortion access, and economic empowerment programs—CHI positively touched the lives of thousands across Liberia. These efforts were not just about delivering services; they were about restoring dignity, building agency, and shifting power back into the hands of communities.

In 2024, CHI expanded both its reach and influence, strengthening its presence across new communities, establishing strategic partnerships, and actively engaging in policy dialogues to challenge and dismantle systemic inequalities. Our collaboration with government bodies, grassroots organizations, and regional networks has reinforced our shared vision for a just and inclusive Liberia.

As we look ahead to 2025, I am confident that CHI will continue to lead with purpose and impact—amplifying the voices of the marginalized, catalyzing social change, and fostering communities where everyone has the right and opportunity to thrive.

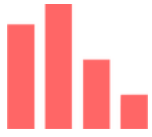
Thank you for walking this path with us. Together, we can create lasting change and transform lives



**MRS. NAOMI TULAY SOLANKE**  
**EXECUTIVE DIRECTOR**



# OVERVIEW OF ACHIEVEMENTS



## PROGRAM OUTCOMES

CHI empowers women, girls, and gender minorities through GBV prevention, SRHR education, and protection efforts, fostering health, rights, and resilience in vulnerable communities



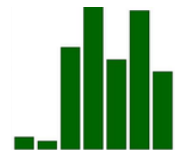
## SKILL DEVELOPMENT

Building internal capacity remained central to CHI's approach, with workshops, retreats, and key achievements enhancing team growth, unity, and sustainability.



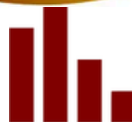
## COMMUNITY INVOLVEMENT

CHI strengthened community connections by engaging women groups and local structures through trainings, awareness raising, and livelihood initiatives to ensure strengthening and collective implementation



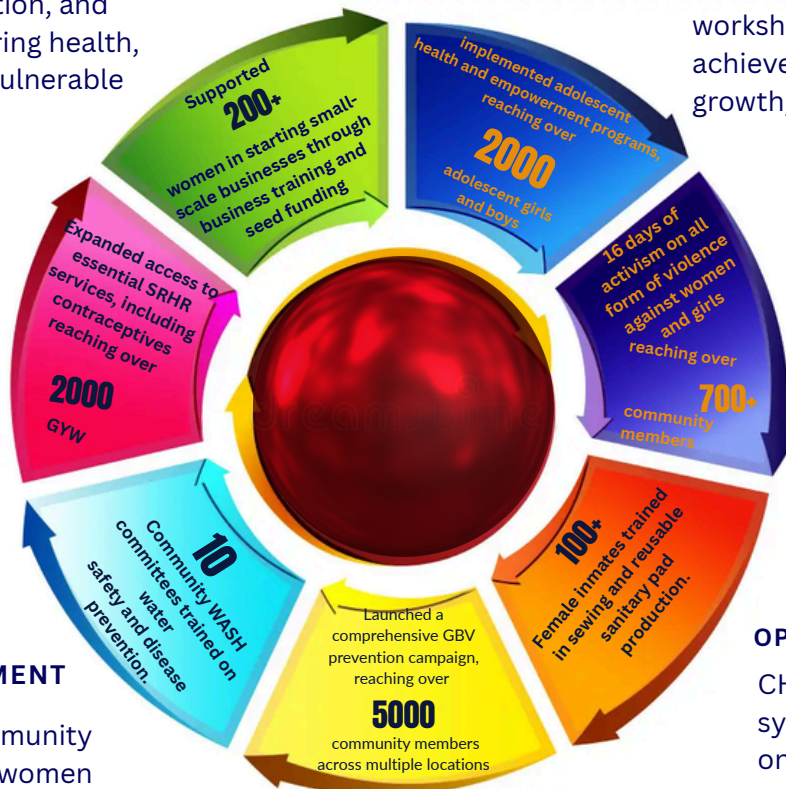
## OPERATIONAL MILESTONES

CHI improved financial systems and enhanced its online visibility, boosting transparency, efficiency, and stakeholder engagement to effectively sustain its mission of promoting community health and well-being



## TEAM STRENGTH AND ADAPTABILITY

Despite facing challenges, the commitment and flexibility of CHI's team ensured successful program implementation and steady progress toward achieving its vision of community empowerment and well-being.



This summary underscores CHI's unwavering commitment to advancing community well-being while showcasing its expanding impact across communities. Through holistic, community-driven programs, CHI continues to foster health, empowerment, and protection—affirming its role as a trusted leader in promoting gender equality, human rights, and sustainable development at the grassroots level.

# Key Achievements



Integrated SRH services into 10 community health outreach programs, reaching over 8,000 women, girls, and youth



Improved water access in 10 communities through partnerships and awareness campaigns linking WASH (Water, Sanitation, and Hygiene) to community's health.



Empowered 100 incarcerated women with sewing skills to produce reusable sanitary pads, supporting dignity and health in correctional facilities.



Trained 20 girls and young women in leadership, advocacy, and public speaking across five communities.



Trained 50 health workers on post-abortion care and rights-based approaches to SRHR services.



Trained over 150 community leaders, and youth advocates on GBV prevention, reporting pathways, and survivor support.



Celebrated 10 years of existence  
CHI@10

# REPORT INTRODUCTION

## WOMEN & GIRLS' RIGHT



The Community Healthcare Initiative (CHI) remains dedicated to empowering communities, promoting gender equality, and improving healthcare access for all, particularly women and girls. Over the past year, CHI has implemented several key programs aimed at addressing gender-based violence (GBV), promoting sexual and reproductive health rights (SRHR), improving water and sanitation, and strengthening the voices of women and girls in decision-making processes. This report highlights the impact and key achievements of our work.



# 2024 Achievements and Organizational Review

This review outlines the key achievements, challenges, and lessons learned by Community Healthcare Initiative (CHI) throughout 2024.

The focus is on Programmatic Outcomes, Skills Development, Community Involvement, Operational Milestones, and Team Strength and Adaptability achieved during the year.



# Programmatic Achievements



The Community Healthcare Initiative (CHI) achieved significant progress in advancing gender equality, health rights, and community empowerment through its comprehensive and inclusive programs. Key outcomes include:

- Increased community capacity to prevent and respond to gender-based violence through awareness campaigns, safe spaces, and leadership training, reaching over 10,000 people.
- Improved access to comprehensive sexual and reproductive health services, including safe abortion, adolescent-friendly health spaces, and post-abortion care. Over 3,000 individuals benefited from integrated SRHR services.
- Supported incarcerated women with vocational skills to produce reusable sanitary pads, improving dignity and health for inmates.
- Promoted behavior change around safe water use and hygiene through community education, reducing waterborne diseases and enhancing health in underserved areas.
- Through the SheLeads program, trained and supported girls and young women to actively participate in community leadership and decision-making platforms.
- Advocated for the recognition of women's sexuality as a right through community dialogues, media engagement, and coalition building, contributing to more open and inclusive conversations on bodily autonomy.
- Provided livelihood support and economic opportunities for women through entrepreneurship training, vocational skills development, and microenterprise support.

## CHALLENGES

While the Community Healthcare Initiative (CHI) made significant strides in advancing gender equality, SRHR, community empowerment, and protection of human rights in 2024, the journey was not without challenges. These experiences provided valuable insights that continue to inform and strengthen CHI's approach to delivering impactful, community-driven programs. Below are some of the key challenges encountered and lessons learned across its interventions.

- Deep-seated beliefs around gender, sexuality, and reproductive rights often led to resistance, particularly in GBV prevention and SRHR advocacy.
- Taboos surrounding abortion and discussions of female sexuality limited engagement in some communities.
- Insufficient funding for scaling up livelihood initiatives and sustained GBV response limited program coverage and follow-up support.

## LESSONS LEARNED

- Involving community leaders, youth, and grassroots organizations from the outset enhanced buy-in, trust, and long-term commitment to change.
- Linking SRHR, GBV, WASH, and economic empowerment led to broader and more sustainable improvements, especially among women and girls.
- Creating safe, inclusive environments—particularly for girls, survivors, and incarcerated women—enabled open dialogue, healing, and personal growth.

# Organizational Achievements

In 2024, the Community Healthcare Initiative (CHI) strengthened its institutional capacity and deepened its role as a leader in community-driven development, gender justice, and rights-based advocacy. A major focus was placed on building internal systems, fostering staff development, and amplifying CHI's voice on regional and global platforms.

Three CHI staff actively participated in several prestigious international gatherings, including the TOSTAN Advanced Seminars on Community Well-Being in Senegal, where they explored sustainable, community-led strategies for social transformation. Additionally, CHI team members joined the Beijing+30 Africa Regional CSOs and Youth Consultation in Addis Ababa, contributing to critical dialogue on gender equality and youth inclusion in Africa's development agenda.

These engagements provided staff with valuable insights, strengthened cross-border partnerships, and reinforced CHI's commitment to continuous learning and innovation. At the national level, the organization also conducted internal trainings, strategy retreats, and peer-learning workshops to align team growth with its evolving mission.

Overall, CHI's organizational achievements in 2024 reflect a dedication to excellence, resilience, and inclusive leadership—positioning the organization for greater influence and deeper impact in 2025 and beyond.

## CHALLENGES

**Limited funding occasionally restricted the number of staff who could attend international events, limiting broader team exposure to global practices.**



## LESSONS LEARNED

- Investing in staff exposure to international learning spaces boosted innovation, motivation, and the ability to integrate global best practices into local programs.
- Sharing lessons from international forums internally enhanced team knowledge and promoted a culture of learning and mutual growth.
- Engaging in regional and global platforms like the TOSTAN Seminar and Beijing+30 Consultation expanded CHI's influence and affirmed its leadership in gender and community-led development.



# COMMUNICATION & OUTREACH ACTIVITIES



## Outreach Success:

In 2024, the Community Healthcare Initiative (CHI) expanded its community outreach efforts to promote health, safety, and rights across several counties in Liberia. Through grassroots mobilization, strategic partnerships, and awareness campaigns, CHI engaged thousands of community members with life-changing information and services.

A major focus was on family planning awareness, where CHI conducted interactive sessions in schools, marketplaces, and community centers. These activities equipped adolescents, women, and men with accurate information on reproductive health, birth spacing, and contraceptive options—contributing to healthier families and informed choices.

CHI also strengthened its GBV prevention efforts through ongoing community dialogues, safe space sessions, and the promotion of available support services. A key milestone was the continued operation and community referral to the GBV One-Stop Center in New Kru Town, where survivors accessed medical care, psychosocial support, legal aid, and case management under one roof.

These outreach initiatives not only raised awareness but also fostered trust and collective action within communities—reinforcing CHI's mission to ensure everyone, especially women and girls, can live in dignity, free from violence and discrimination.

# FINANCIAL OVERVIEW

In 2024, the Community Healthcare Initiative (CHI) maintained a strong focus on transparency, accountability, and resource optimization to support its mission-driven work. Strategic investments were directed toward core program areas, including SRHR, GBV prevention, community empowerment, and protection for human rights defenders.

CHI successfully diversified its funding base through support from institutional donors such as DIGNITY, RFSU, FEMNET, IRISH AID, IPPF, SAAF, ACF, and strategic partnerships. The organization implemented robust financial management systems to ensure efficient resource allocation, compliance with donor requirements, and timely reporting.

A significant portion of funding was channeled into direct community interventions, staff capacity development, and operational infrastructure, reflecting CHI's commitment to sustainable impact and organizational resilience.

Regular audits, financial reviews, and board oversight contributed to strengthened financial governance and credibility with partners. Looking ahead, CHI aims to further expand its funding sources and deepen investments in high-impact, community-led programs.

**Expenditure:**

**Remaining Balance:**

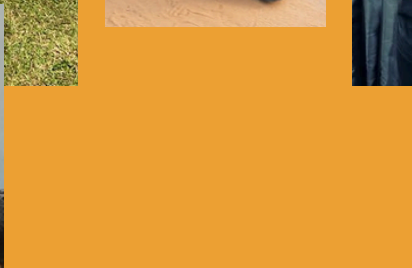
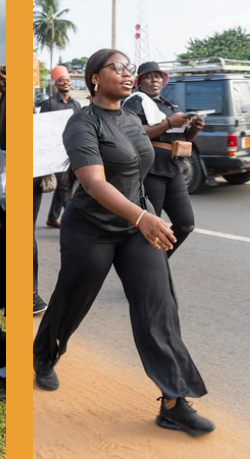
# STRATEGIC PRIORITIES FOR 2025

Building on the achievements and lessons of 2024, the Community Healthcare Initiative (CHI) is focused on deepening impact, scaling innovations, and strengthening systems that promote the health, rights, and dignity of women, girls, and gender minorities. CHI's 2025 strategic priorities are centered around the following key areas:

- Strengthen gender-responsive health systems, improve and adolescent-friendly services.
  - Enhance community-led GBV campaigns, increase survivor support structures, and advocate for stronger protection laws and accountability.
  - Expand livelihood programs for women and girls, especially in marginalized communities, linking economic independence with health and protection services.
- Invest in leadership training, mentorship, and education opportunities to amplify girls' voices and shift harmful social norms.
  - Provide legal, psychosocial, and digital safety support while strengthening national and global advocacy networks.
  - Empower local structures and leaders to lead development efforts, ensuring sustainability through participatory planning and partnerships.
  - Build CHI's internal systems, enhance team capacity, and diversify funding for long-term growth and impact.











Visit our website at  
[www.chciliberia.org](http://www.chciliberia.org)  
or email us at **info@chciliberia.org**  
to learn more and get involved



"With collective effort, we can make 2025 a year of deeper impact—empowering communities and advancing women and girls well-being.